

**Internal Quality Assurance Cell (IQAC)**

**Feedback from Teacher for the Year 2021-22**

Name of the Teacher: \_\_\_\_\_ Experience: \_\_\_\_\_

Department: \_\_\_\_\_

Note: Your responses will be kept confidential and used only for the stated purpose. Give response for three years course.

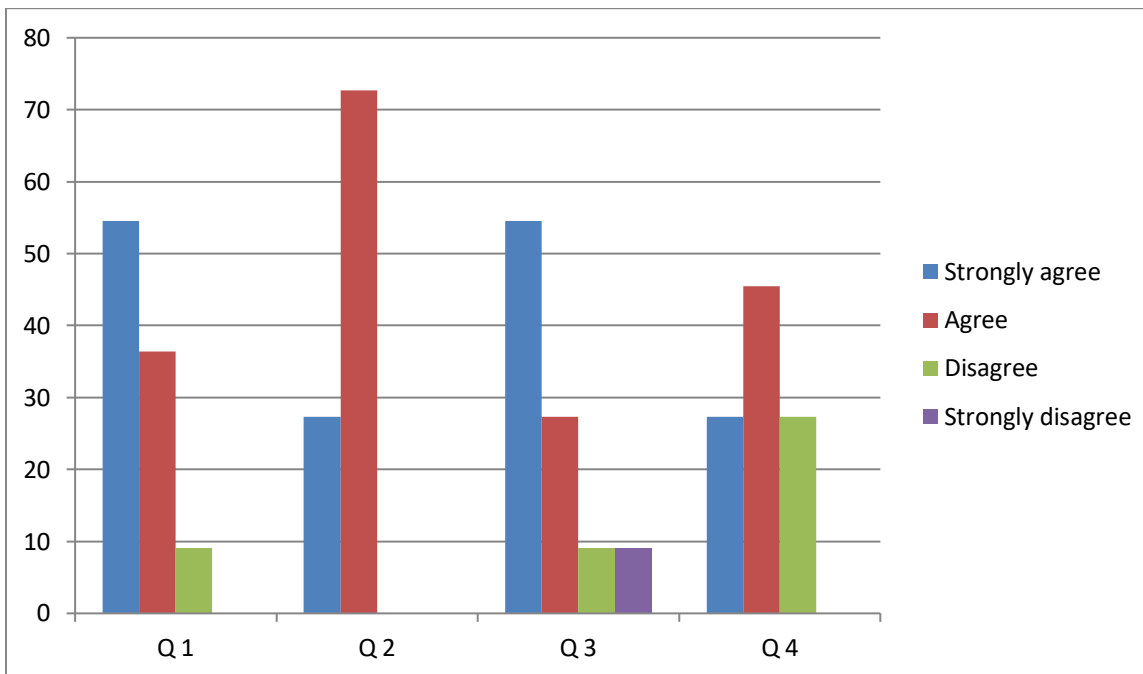
No	Particulars	Strongly Agree	Agree	Disagree	Strongly Disagree
<b>CURRICULUM DESIGN AND DEVELOPMENT</b>					
1	Board of studies takes into consideration the experience to ensure relevance of the programme offering.	54.5	36.4	9.1	0
2	Employability skills are given weight-age in curriculum design and development.	27.3	72.7	0	0
3	I have been given enough freedom to contribute my ideas on curriculum design and development.	54.5	27.3	9.1	9.1
4	The system followed by the parent University for the design of curriculum is effective and has been updated from time to time. Revised syllabus workshop organized.	27.3	45.5	27.3	0
<b>TEACHING, LEARNING, EVALUATION &amp; RESEARCH</b>					
1	The admission process adopted by the college is proper and effective.	27.3	54.5	9.1	9.1
2	Student centered teaching-learning resources are available in the college.	45.5	54.5	0	0
3	The faculty is updating their knowledge and skills and allowed to update through OC /RC.	81.8	18.2	0	0
4	The classes are taking place as per schedule.	72.7	27.3	0	0
5	College library is a major source of information and reference.	54.5	45.5	0	0
6	The procedure followed for acquiring new books and journals ensures subject related titles and journals in the library.	63.6	36.4	0	0
7	The teaching aids in the department are sufficient.	18.2	63.3	18.2	0
8	The teachers are encouraged to carry out Minor/Major Research and M.Phil/Ph.D.	81.8	18.2	0	0
9	The teachers are encouraged to organize and also participate in seminars/workshops/symposia/conferences/research paper publication .	54.5	45.5	0	0
10	The teachers are encouraged to establish linkage with Industry outside other institutions.	36.4	63.6	0	0
11	The examination system followed by the college is as laid down by college and University and effective.	72.7	27.3	0	0
12	The evaluation system followed by the college is effective.	72.7	27.3	0	0
<b>INFRASTRUCTURE :</b>					
1	The class rooms, labs and furniture available are adequate.	9.1	63.6	27.3	9.1
2	The infrastructure available in the department is to the maximum extent.	27.3	45.5	27.3	0
<b>GOVERNANCE :</b>					
1	The administration is sincerely putting efforts for the development of the college.	54.5	45.5	0	0
2	The faculties are given freedom to express their opinions and management is accessible	45.5	54.5	0	0
3	The IQAC is working well for promoting quality in the Department and college.	36.4	54.5	9.1	0
4	The files in office are processed on time.	27.3	54.5	18.2	0

Suggestions for improvement:

**Internal Quality Assurance Cell (IQAC)**  
**Feedback from Teacher for the Year 2021-22**

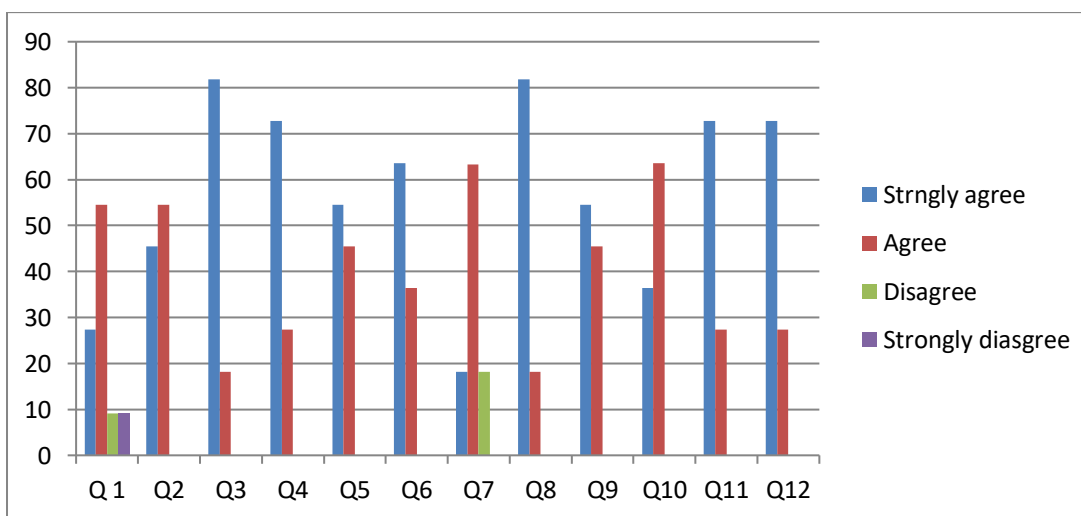
Graphical Analysis

**CURRICULUM DESIGN AND DEVELOPMENT**



1. The policy adopted by university is decentralize as it takes opinions and vertical channel of suggestion to take constructive approach towards syllabus frame. It's a reflection of upward communication and sensitization efforts.
2. Taking first two responses indicate the employment opportunities are given weightage in the design and development.
3. The members are asked freely their ideas and design, the curriculum, the system of communication are in place for the development of curriculum. Though some reservations are observed.
4. The green and red color bars prove the response are lucrative and more need to be done with regard, democratic and secular to put their ideas freely.

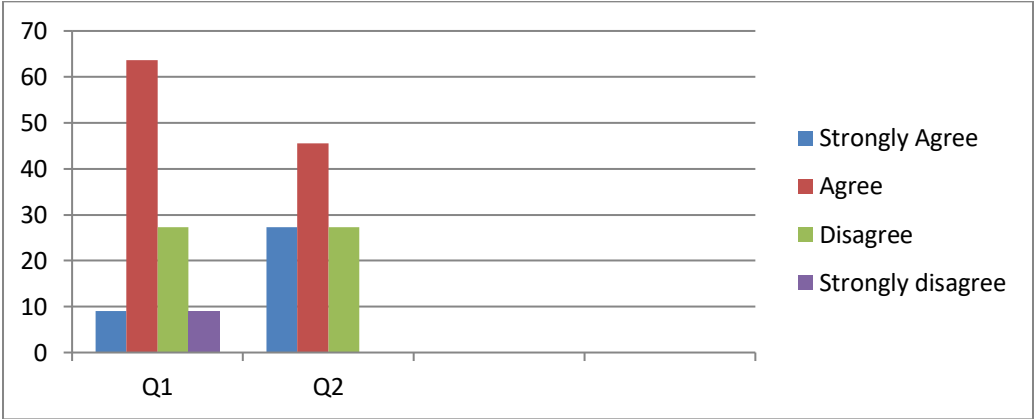
**TEACHING, LEARNING, EVALUATION & RESEARCH**



1. As the college admission are online and adopted by online registration the students and colleges have free and secular access to the all sections of education and resources in the campus.
2. The responses indicate the resources and curriculum designed are students at the centre. The faculties are encouraged to adopt new knowledge and train themselves for the academic year.
3. The schedule of the classes are taking place as per schedule and all resources are freely available for the students.

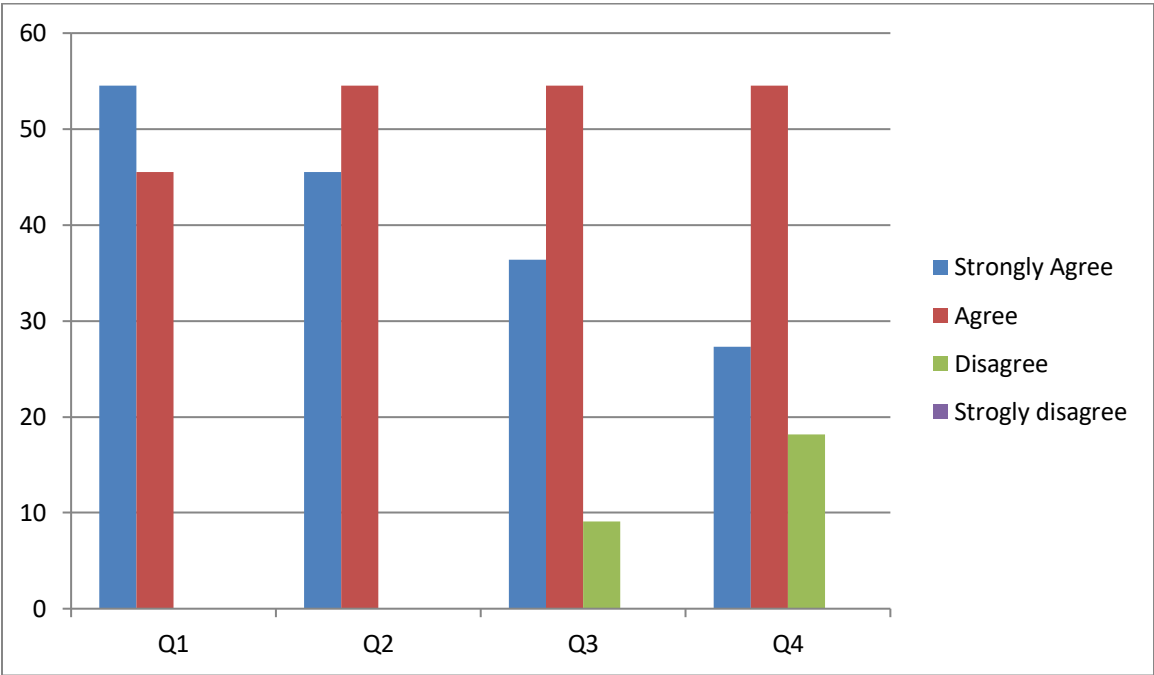
- 4. The procedures followed are in place through recommendation of the teachers and need and reference books are obtained for the latest updated syllabus. The on demand books are made available.
- 5. The teaching aids are proper to some teacher but the laboratory and other dept require few improvements in the regard.
- 6. The research activities are promoted among the faculty members, to apply for Minor Research Project and M.phil and PhD. Research cell active in the regard.
- 7. The industry linkages are encouraged through free fair and good relations for other and corporate activities and exposure purposes.
- 8. The exam are as per cluster and university schedule therefore there are little scope for the college. Though it is conducted as per schedule.

INFRASTRUCTURE



- 1. The lucrative responses in green and strongly disagree segment indicate the scope for the infrastructure related improvements.
- 2. Though few essentials are obtained for laboratory practical and other infrastructure.

GOVERNANCE



- 1. Taking two responses into account, there are sincere efforts to develop college, faculty and research. Management is active and caring towards education in the tribal region.
- 2. The faculties are given freedom and accessible opinions are listened to improve the governance.
- 3. IQAC is promoting the quality in teaching and learning process in the department for quality framework and improvements.
- 4. The files are clearly reasonably processed well on time but some reservations are found to introspect by the staff.

## Science College, JawharDist: Palghar 401 603

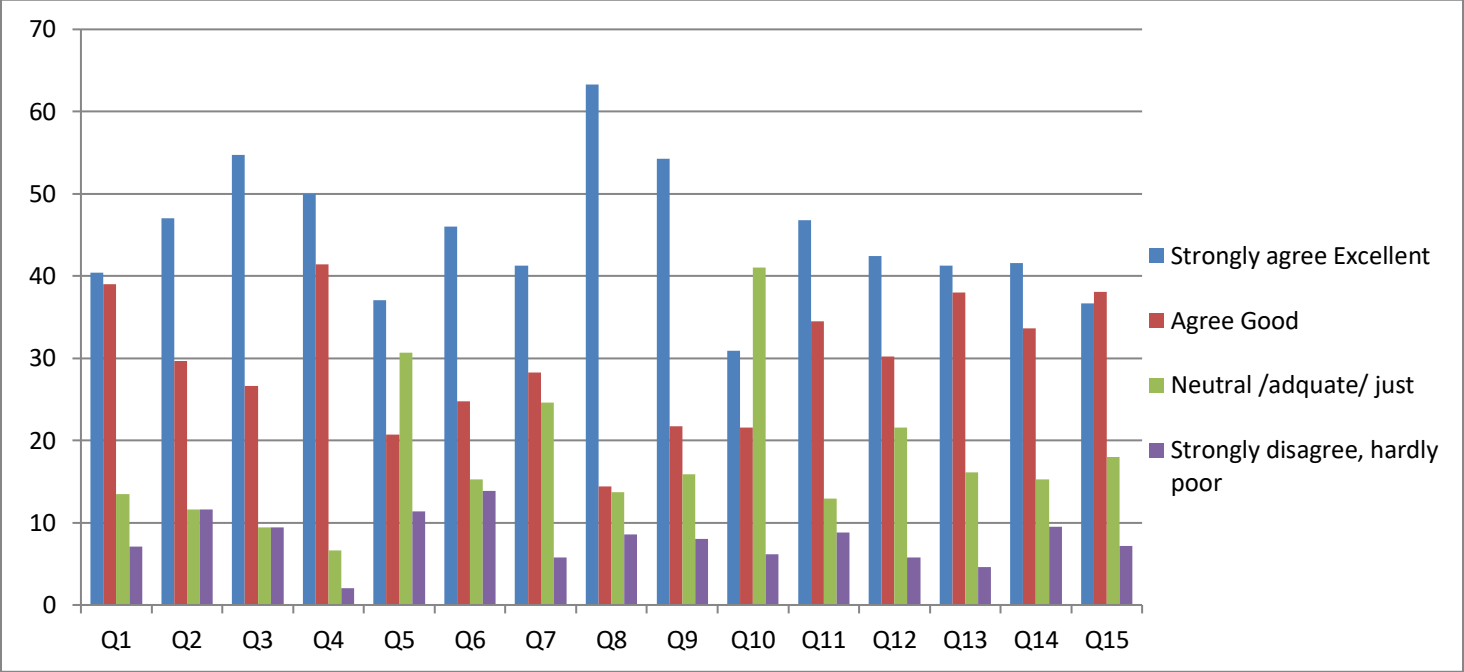
### Student Satisfaction Survey (On overall functioning of Institute)

This institute is conducting a Student Satisfaction Survey regarding overall functioning of the institute, which will help to upgrade the quality in higher education. **The student need to respond to all the questions by “√” mark** given in the following format with her/his sincere effort and thought. Her/his identity will not be revealed.

#### **Institutional Feedback Analysis : 2021-22**

Sr. No.	Questions	Option A Series 1	Option B Series 2	Option C Series 3	Option D Series 4
1.	Extent of syllabus covered in the class	40.4	39	13.5	7.1
2.	The teacher is prepared for the class	47	29.7	11.6	11.6
3.	The teacher makes the subject relevant to real life situation	54.7	26.6	9.4	9.4
4.	The teacher's knowledge of the subject is	50.0	41.4	6.6	2.0
5.	How much extent teacher used ICT tools in the class	37.1	20.7	30.7	11.4
6.	Student Grievance redressal system is functional and effective	46.0	24.8	15.3	13.9
7	The institute takes active interest in promoting internship, student exchange, field visit, Opportunities for students.	41.3	28.3	24.6	5.8
8	The teacher is helpful in mentoring	63.3	14.4	13.7	8.6
9	The institution have facilities and makes effort to participate students in NSS, NCC, Sport and Cultural activities	54.3	21.7	15.9	8.0
10.	Library, Laboratory & computer laboratory facility	30.9	21.6	41	6.2
11	Functioning and effectiveness of competitive examination preparation and career counseling	46.8	34.5	12.9	8.8
12	The institution provides multiple opportunities to learn and grow.	42.4	30.2	21.6	5.8
13	Student involvement in participative management	41.3	38.0	16.1	4.6
14	Placement facility in the Institute	41.6	33.6	15.3	9.5
15	The overall institutional performance is very good	36.7	38.1	18.0	7.2

**Graphical Analysis of Institutional Feedback for the year 2021-22**



1. The college faculty meticulously completing the syllabus in each semester to the maximum efforts.
2. The teaching faculties are reasonably during pandemic period to teach but some faculty need to prepare, the suggestions to maintain study reference related reading for the delivery.
3. The teachers are establishing linkages to relate the content of the syllabus to real life situations, coordinate to real life situation. But more efforts are needed.
4. The students wish the knowledge of the teacher to be presented to them. The teachers fair better in the knowledge.
5. The ICT used in pandemic period but emerged drawbacks and should promote teaching tools for e-content delivery and use of technology. The teaching was online but the responses are reserved nature and hesitant.
6. The student and grievance cell is less burdened and reasonably good and functional.
7. The teachers are promoting field and exposure visits to the nearby study based areas for teaching and learning.
8. The colleges are providing facilities and appear highly satisfactory about extracurricular and co-curricular facilities to boost and explore their potential. They are serving as mentor to address over the phone and personal interaction.
9. The college provides laboratory and library services satisfactorily to the students as the data shows the higher number on the scale. However lockdown restricted the footfall.
10. The college human resource and facilities need to be tuned for more competitive exam and awareness need to work on. Many efforts are expected.
11. The college requires caring the students' needs and effectuating the opportunities to learn and grows. The competitive guidance marred during pandemic period.
12. The students are reasonably administered into the college for management and taken into account as and when require.
13. The placement facility in the institute needs to be worked out. Students marred from administrative frame work.

14. The institution performance is reasonably good and being in the tribal region. But much need to be done in the regard.

